



mightyMAXX

by Flash Networks Group, Inc.

Prepared for Research and Exploration

MOBILE ACCESS SOLUTION

FEATURES

- Rapid deployment in any environment
- Multiple power and uplink options
- Multiple wireless, public safety and Internet-of-Things applications
- Operational in all weather conditions
- Co-branding options
- Professional delivery, activation and support services
- Hosted/managed services
- Custom configurations



Applications for the Research Industry Include:

- Remote Field Research
 - Supporting scientific research in remote or extreme environments.
 - **MightyMAXX** offers reliable connectivity, satellite communication, and data storage to enable uninterrupted research and data collection.
- Expedition Support
 - Facilitating communication and data management for exploratory missions.
 - **MightyMAXX** provides rugged, adaptable solutions for real-time data transmission, GPS tracking, and communication.
- Environmental Monitoring
 - Tracking and analyzing environmental conditions, climate change effects, and wildlife populations.
 - **MightyMAXX** integrates with sensors, cameras, and data collection tools.

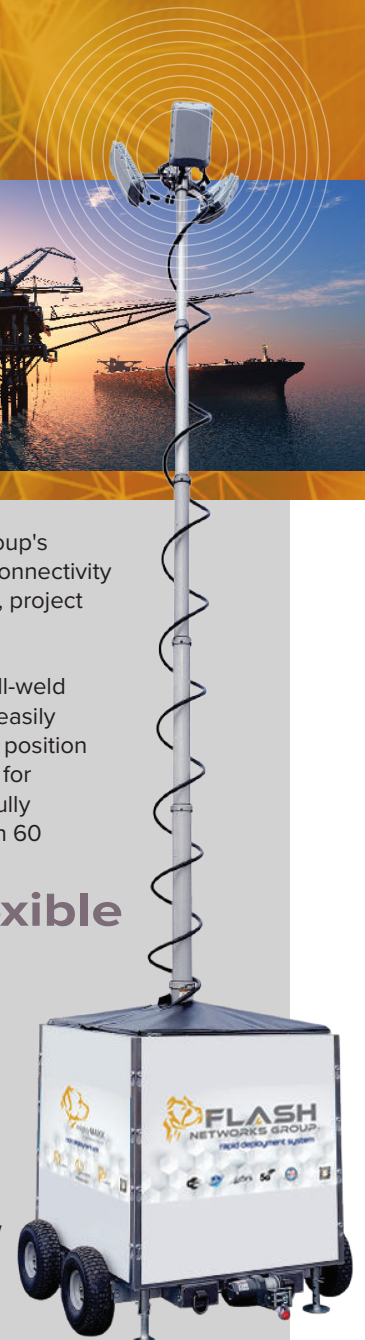
MightyMAXX is part of Flash Networks Group's portfolio of mobile solutions bringing fast connectivity for event producers, government agencies, project contractors and more.

MightyMAXX is a compact unit built with all-weld construction. It is forklift-ready and can be easily shipped (24 units per semi) and towed into position on site. Jacks are included to level the unit for operation. A single technician can have it fully deployed and connecting users in less than 60 minutes.

Adaptable, flexible technology

MightyMAXX has Power-over-Ethernet driven Wi-Fi access points to provide user access to internet and cloud applications. Cameras, sensors and other PoE-driven devices can also be added.

MightyMAXX can be equipped to uplink to available carriers including cellular LTE, Low Earth Orbit Satellite, fiber and/or traditional copper communication lines.



Patent Pending: 63731275



mightyMAXX
by Flash Networks Group, Inc.

MightyMAXX provides communications, monitoring, and data solutions where they are needed most. Whether in remote field research, during challenging expeditions, or in extreme exploration environments, MightyMAXX delivers adaptable, robust, and quick-deploy solutions for seamless integration, data collection, and operational support.

MightyMAXX works in all environments. Any terrain. Any weather. The extendable mast is wind-rated to 80 mph at full weight load. Capable of supporting four devices weighing up to 70 pounds.

MightyMAXX has a long operational time with multiple power options. An onboard generator and fuel cell will support up to 80 hours of independent operation. An uninterruptible power supply and a battery array are also included to ensure continuous operations. MAXX can also be plugged into any 110VAC source.

MightyMAXX Tech Specs:

Physical Specifications

Footprint: 5'x4'
Transport Height 7'
Mast Extendable up to 23'
Weight: 1300 lbs

Wireless Technology

Industry Standard 4x4 Access Points
Mobile Cellular LTE connectivity: 3G, 4G or 5G
Low Earth Orbit Satellite

Wi-Fi Capability

Wi-Fi 5, 6 or 7
Up to 400 Clients
Multiple SSIDs
Programmable bandwidth per SSID/client
2000 ft plus range in any direction



ABOUT US

Flash Networks Group is a technology interoperability team specializing in complex infrastructure solutions. Flash uses industry-leading products that result in tested, scalable, and ultra-reliable network designs. Flash's services include:

- Discovery – Identify the customer's requirements and goals.
- Design – Create the best network for the customer.
- Audit – Analyze existing network equipment.
- Security - Ensure physical network security, & cybersecurity.
- Execution of Design – Implement and install the finalized design.
- Testing – Conduct pre- and post-installation site surveys.
- Documentation – Develop and provide project documentation and drawings.
- Day-2 Support Services – Provide post-installation support.

Flash will reduce your total project cost through improved efficiency. Flash's holistic solution incorporates all aspects of the network: connectivity, performance, availability, and security.

Flash creates custom design-to-delivery solutions unique to each customer and environment. Our certified professional project managers, experienced engineers, and industry experts will create a solution that not only supports you today – but will continue to support your future growth and operations.

Flash Networks Group, Inc.

3550 National Drive, Norman, OK 73069

405.960.4140

www.WeAreFNG.com



More information available upon request

